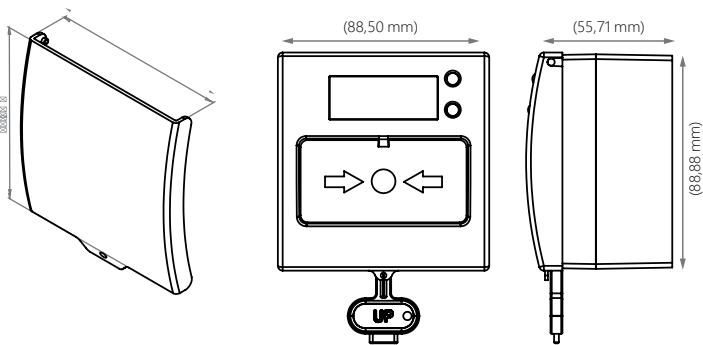


TFB-1166
Intelligent Addressable Manual Call Point with
Built-in Isolator



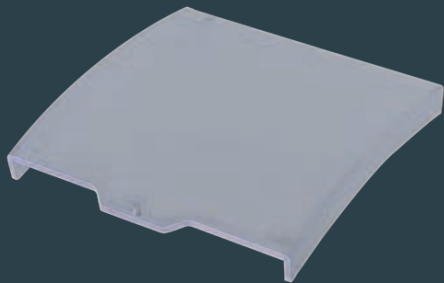
EN54-11 EN54-17 EN54-13

TFB-1166 is an addressable manual call point with built-in isolator, designed and produced comply with EN54-11 and EN54-17. It is equipped with dual LEDs to indicate local alarms (Red Colored LED) and short-circuit alert (Yellow Colored LED). TFB-1166 MCP can be used with TFP-12XX Addressable control panels through Flash Link protocol. It has resettable operation structure which can be reset by using a special plastic key. Suitable for flush and surface mounting. An optional transparent protection cover can be installed to avoid false alarms by accidental pressing.



Technical Specifications	TFB-1166
Standard	EN 54-11/17
Operating Type	A Type Manual
Resettable	Yes
Power	10-32VDC
Standby Consumption	1,5mA.
Alarm Consumption	6mA.
Shortcut Isolator Consumption	8mA.
Dimensions (mm)	86 x 55 x 88 mm
Weight	145gr
Body Material and Color	RAL3001 RED
Alarm Indicator LED	RED
Status LED	Blue
Isolator LED	Yellow
Type of Fragile Element	Resettable Polycarbonate
Operating Temperature	-10°C ~ 60°C
Humidity	≤93% RH at +40°C
Protection Class	IP30

TFA-0165
Transparent Protection Cover



The cover is made of robust polycarbonate transparent material. It is used to prevent accidental button activation.

